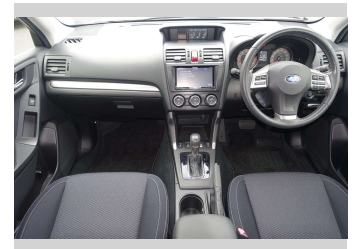
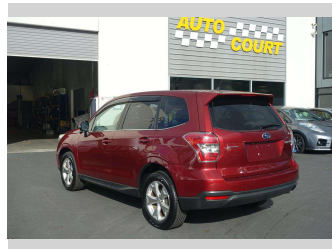


# 2013 Subaru Forester 2.0i-L AWD



**Purchase Price** **\$18,995**  
Includes GST, Registration & Licensing

Finance may be available on this vehicle. Ask one of our friendly staff for more information.



Gain peace of mind with Mechanical Breakdown Insurance. **Ask us how.**



**Top features**

- » "Smart Key" Operation
- » 2.0 litre Boxer EFi
- » ABS Braking
- » All Wheel Drive
- » Alloy wheels
- » CD Player
- » Central Locking
- » Climate Control
- » Cruise Control
- » Dual Airbags
- » Electric adj Seats
- » Electric Mirrors
- » Electric Windows
- » EyeSight Driver Assist
- » Forward Collision Miti...
- » Heated Front Seats
- » Immobiliser
- » Keyless Entry

Body Style  
**5 door, Station Wagon**

Odometer  
**32,407 km**

Engine  
**1995 cc, Twin Cam Boxer EFi**


Fuel Type  
**Petrol**

Transmission  
**CVT, All Wheel Drive**

Wheels  
**17", Alloy**

VIN  
**7AT0GF17X24030437**

Interior  
-

Safety  
  
Based on 2024 UCSR rating for 12-18 models

Reg No.  
-

Ext Colour  
**Red**

History  
**Ex-Overseas**

Seats  
**5 seats**

CO2 Emissions  
**★★★★☆**  
**173 grams/km**

Energy Economy  
**★★☆☆☆**  
**Annual fuel cost of \$2,900**  
**7.4L per 100km**

Cost per year is an estimate based on petrol price of \$2.80 per litre and an average distance of 14000 km. Emissions and Energy Economy figures standardised to 3P WLTP.

**Stock ID: 6727**



Auto Court | Phone 03 455 3000 | Email info@autocourt.net.nz  
cnr Burns and Neville Streets, Carisbrook, DUNEDIN 9012, New Zealand  
www.autocourt.net.nz