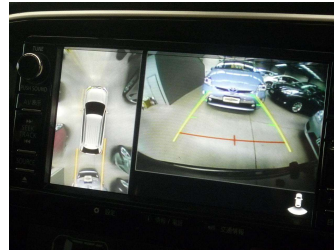
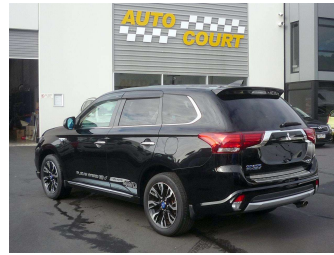


# 2015 Mitsubishi Outlander PHEV G AWD




**Purchase Price** **\$28,000**  
Includes GST, Registration & Licensing

Finance may be available on this vehicle. Ask one of our friendly staff for more information.



Gain peace of mind with Mechanical Breakdown Insurance. **Ask us how.**



**Top features**

- » "Smart Key" Operation
- » 2.0 litre Plug-in Hybr...
- » 360° Around-View Monit...
- » 7 Airbags
- » ABS Braking
- » All Wheel Drive
- » Alloy wheels
- » CD Player
- » Central Locking
- » Centre diff lock
- » Climate Control
- » Cruise Control
- » Electric adj driver's...
- » Electric Mirrors
- » Electric Windows
- » Forward Collision Miti...
- » Heated Front Seats
- » Heated Steering Wheel

Body Style  
**5 door, Station Wagon**

Odometer  
**23,648 km**

Engine  
**1998 cc, Plug-in Electric Hybrid**


Fuel Type  
**Plug-in Hybrid**

Transmission  
**Automatic, All Wheel Drive**

Wheels  
**18", Alloy**

VIN  
**7AT0CJ3MX23300971**

Interior  
-

Safety  
  
Based on 2024 UCSR rating for 12-21 models

Reg No.  
**RBC291**

Ext Colour  
**Black**

History  
**Ex-Overseas**

Seats  
**5 seats, Part leather/suede**

CO2 Emissions  
**★★★★☆**  
**43 grams/km**

Energy Economy  
**★★★★☆☆**  
**Annual fuel cost not available**  
**6.1L per 100km**

Actual figures and cost per year will vary based on proportion of hybrid mode driving and battery charging schedule. Emissions and Energy Economy figures standardised to 3P WLTP.

**Stock ID: 6525**



Auto Court | Phone 03 455 3000 | Email info@autocourt.net.nz  
cnr Burns and Neville Streets, Carisbrook, DUNEDIN 9012, New Zealand  
www.autocourt.net.nz