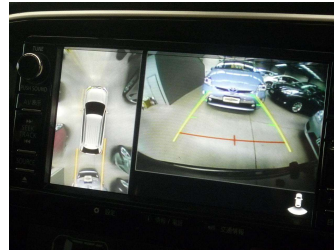
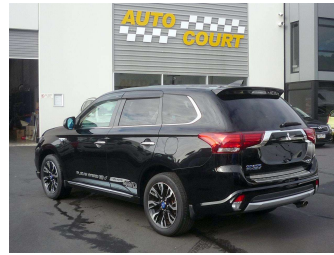


2015 Mitsubishi Outlander PHEV G 4WD



Purchase Price **\$28,000**
Includes GST, Registration & Licensing

Finance may be available on this vehicle. Ask one of our friendly staff for more information.



Gain peace of mind with Mechanical Breakdown Insurance. **Ask us how.**



Top features

- » "Smart Key" Operation
- » 2.0 litre Plug-in Hybr...
- » 360° Around-View Monit...
- » 7 Airbags
- » ABS Braking
- » All Wheel Drive
- » Alloy wheels
- » CD Player
- » Central Locking
- » Centre diff lock
- » Climate Control
- » Cruise Control
- » Electric adj driver's...
- » Electric Mirrors
- » Electric Windows
- » Forward Collision Mit...
- » Heated Front Seats
- » Heated Steering Wheel

Body Style
5 door, SUV/4x4

Odometer
20,396 km

Engine
1998 cc, Plug-in Electric Hybrid

Fuel Type
Plug-in Hybrid


Transmission
Automatic, All Wheel Drive

Wheels
18", Alloy

VIN
7AT0CJ3MX23300971

Interior
-

Safety



Based on 2023 UCSR rating for 12-21 models

Reg No.
-

Ext Colour
Black

History
Ex-Overseas

Seats
5 seats, Part leather/suede

CO2 Emissions
★★★★☆
43 grams/km

Energy Economy
★★★★☆☆

Annual fuel cost not available
6.1L per 100km

Actual figures and cost per year will vary based on proportion of hybrid mode driving and battery charging schedule.. Emissions and Energy Economy figures standardised to 3P WLTP.

Stock ID: 6525



Auto Court | Phone 03 455 3000 | Email info@autocourt.net.nz
cnr Burns and Neville Streets, Carisbrook, DUNEDIN 9012, New Zealand
www.autocourt.net.nz